

ZTL & AFV

What you need to know

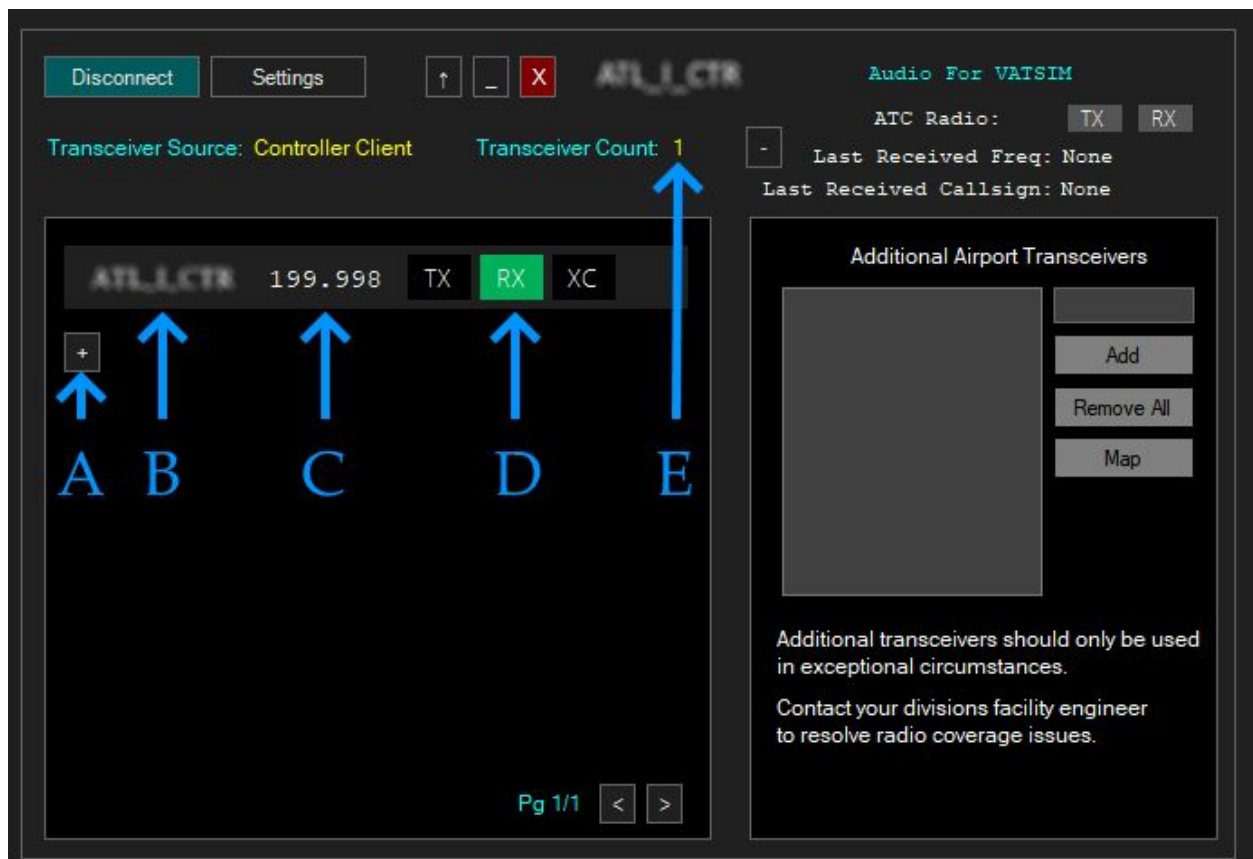
Required Software:

For the time being, all controllers must utilise the Audio-For-VATSIM Standalone client. This client is available for download [here](#). Once you've run the installer, be sure to open the program and configure the settings.

Logging onto the network:

The callsign you log on with does not matter; log on with the callsign you normally would. (Preferably, one in accordance with the ZTL Facility SOP).

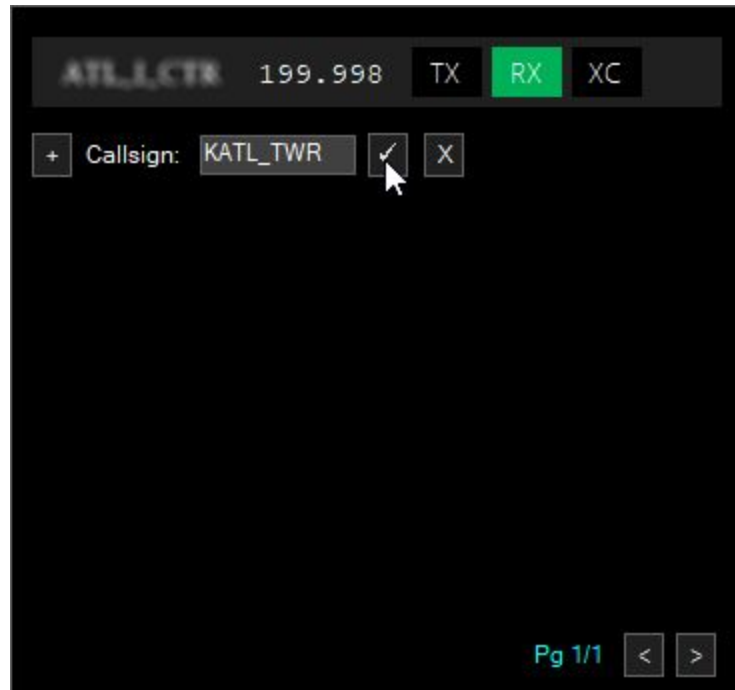
After you've logged onto the network in your controlling client, log on with Audio For VATSIM (AFV).



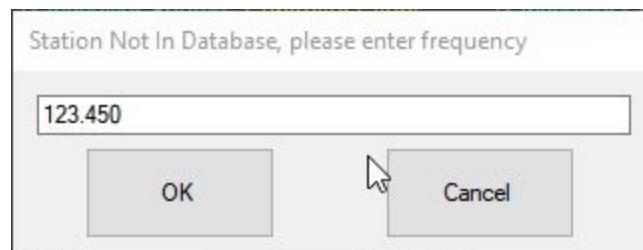
The information contained herein is for reference only. Some information may be out of date. **Always reference the published SOP for the correct frequencies to use.** Last updated 2/2/2020.

Item A:

Once you're in, your AFV client should look like this. Let's look at each component:
By default, the callsign you log in with will be on your frequency list. To add more frequencies, press the "+" button (A, in the screenshot). A box will appear. Type the facility (appendix A), position identifier (appendix B), or add a position by typing (ICAO)_(POSITION).



Another dialogue will then appear, asking for a frequency.



Click OK. This will create a transceiver at the airport specified, with a [pre-defined range for the position specified](#).

Alternatively, you can add facilities/pre-defined positions. A table in attachment A lists all facilities, and attachment B lists predefined positions.

Items B and C:

Item B is the position identifier for the frequency. The first position in your frequency list will always be the callsign you log on with. **The position identifier for the frequency is**

The information contained herein is for reference only. Some information may be out of date. **Always reference the published SOP for the correct frequencies to use.** Last updated 2/2/2020.

cross-matched with the predefined positions in attachment B. If a match is found, the transceiver sites for that position will be used.

Item C is the frequency for that position. The first position in your frequency list will use the frequency you prime up with. All other positions will use the frequency associated with the position in attachment B.

We recommend you utilise the positions pre-defined to ensure that there are no coverage issues.

Item D:

There are three buttons that appear here.

“TX” allows you to transmit on this frequency when your Push-To-Talk is pressed.

“RX” allows you to receive transmissions on this frequency.

“XC” allows you to cross-couple this frequency. Any frequencies that this is activated on will broadcast any communications received to other pilots that may not be in range of the initial caller. (This is a highly-simplified explanation of this functionality.)

Item E:

The amount of transceivers that you are currently receiving on.

When working Atlanta Center combined, you should have 26. When working Atlanta Approach combined, you should have 4.

What if the position I’m working is not in the VATSIM database?

Your vis-point (or radar site, in vSTARS) will be used as your transceiver site. The frequency used will be your primed frequency.

Why are some Class D ATCTs here, but not others?

Some fields are too far away from main transceivers. To ensure radio coverage on the ground, transceivers were added to these fields. Tower positions were added as a result of the new transceivers.

If you have any questions, please email fe@ztlartcc.org.

(This is the preferred method of communication, even if I’m in Teamspeak.)

Attachment A:

To expedite adding positions into your Audio-For-VATSIM, you may type the associated “Quick-Add Name” for the desired facility.

Facility	Quick-Add Name
Atlanta Center	ZTL or KZTL
Atlanta Large TRACON	A80
Atlanta ATCT	ATL
Augusta ATCT/TRACON	AGS
Asheville ATCT/TRACON	AVL
Birmingham ATCT/TRACON	BHM
Tuscaloosa ATCT	BHM
Chattanooga ATCT/TRACON	CHA
Charlotte ATCT/TRACON	CLT
Concord ATCT	CLT
Stanley County ATCT	CLT
Greensboro ATCT/TRACON	GSO
Greer ATCT/TRACON	GSP
Montgomery ATCT/TRACON	MGM
Knoxville ATCT/TRACON	TYS
Tri-City ATCT/TRACON	TRI

Attachment B:

Position Identifier	Frequency	Notes	Associated Facility
ATL_#_CTR	###.###	# denotes area covered	K/ZTL
ATL_#L_CTR	###.###	# denotes area (LOW) covered	K/ZTL
ATL_##_CTR	###.###	## denotes INDIVIDUAL SECTOR ID	
ATL_UH_CTR	125.020		K/ZTL
ATL_HI_CTR	132.970		K/ZTL
ATL_LO_CTR	121.350		K/ZTL
ATL_UL_CTR	125.150		K/ZTL
ATL_N_APP	125.700	Has outers coverage	A80
ATL_S_APP	125.650	Has outers coverage	A80
ATL_H_APP	127.900	Has outers coverage	A80
ATL_D_APP	128.000		A80
ATL_V_APP	127.250		A80
ATL_O_APP	124.600		A80
ATL_A_APP	118.350		A80
ATL_P_APP	126.970	Has outers coverage	A80
AHN_APP	127.500		A80
CSG_APP	125.500		A80
MCN_APP	119.600		A80
ATL_N_TWR	119.100		ATL
ATL_C_TWR	119.300		ATL
ATL_S_TWR	119.500		ATL
ATL_N_GND	121.900		ATL
ATL_C_GND	121.750		ATL

The information contained herein is for reference only. Some information may be out of date. **Always reference the published SOP for the correct frequencies to use.** Last updated 2/2/2020.

Position Identifier	Frequency	Notes	Associated Facility
ATL_S_GND	121.650		ATL
ATL_1_DEL	118.100		ATL
ATL_2_DEL	118.700		ATL
AGS_DEL	118.650		AGS
AGS_GND	121.900		AGS
AGS_TWR	118.700		AGS
AGS_W_APP	126.800		AGS
AGS_E_APP	119.150		AGS
AGS_D_APP	119.720		AGS
AVL_GND	121.900		AVL
AVL_TWR	121.100		AVL
AVL_E_APP	125.800		AVL
AVL_W_APP	124.650		AVL
BHM_DEL	125.675		BHM
BHM_GND	121.700		BHM
BHM_TWR	119.900		BHM
BHM_N_APP	127.670		BHM
BHM_E_APP	120.500		BHM
BHM_S_APP	123.800		BHM
BHM_W_APP	120.150		BHM
CHA_DEL	120.950		CHA
CHA_GND	121.700		CHA
CHA_TWR	118.300		CHA

The information contained herein is for reference only. Some information may be out of date. **Always reference the published SOP for the correct frequencies to use.** Last updated 2/2/2020.

Position Identifier	Frequency	Notes	Associated Facility
CHA_W_APP	119.200		CHA
CHA_E_APP	125.100		CHA
CHA_F_APP	126.500		CHA
CLT_DEL	127.150		CLT
CLT_E_GND	121.900		CLT
CLT_W_GND	121.800		CLT
CLT_E_TWR	118.100		CLT
CLT_W_TWR	126.400		CLT
CLT_H_APP	126.150	Covers KVUJ	CLT
CLT_U_APP	125.350		CLT
CLT_A_APP	127.700		CLT
CLT_F_APP	119.000		CLT
CLT_W_APP	120.500		CLT
CLT_N_APP	134.750	Covers KVUJ	CLT
GSO_DEL	121.750		GSO
GSO_GND	121.900		GSO
GSO_TWR	119.100		GSO
GSO_N_APP	124.350		GSO
GSO_S_APP	118.500		GSO
GSP_GND	121.900		GSP
GSP_TWR	120.100		GSP
GSP_E_APP	119.400		GSP
GSP_W_APP	118.800		GSP

The information contained herein is for reference only. Some information may be out of date. **Always reference the published SOP for the correct frequencies to use.** Last updated 2/2/2020.

Position Identifier	Frequency	Notes	Associated Facility
JQF_DEL	118.550		CLT
JQF_GND	121.850		CLT
JQF_TWR	134.650		CLT
MGM_DEL	118.300		MGM
MGM_GND	121.700		MGM
MGM_TWR	119.700		MGM
MGM_E_APP	132.450		MGM
MGM_N_APP	121.200		MGM
MGM_S_APP	118.850		MGM
MGM_W_APP	124.000		MGM
TCL_DEL	120.775		BHM
TCL_GND	121.800		BHM
TCL_TWR	126.300		BHM
TRI_GND	121.900		TRI
TRI_TWR	119.500		TRI
TRI_E_APP	128.050		TRI
TRI_W_APP	125.500		TRI
TYS_DEL	121.650		TYS
TYS_GND	121.900		TYS
TYS_TWR	121.200		TYS
TYS_N_APP	118.000		TYS
TYS_S_APP	123.900		TYS
VUJ_GND	121.750		CLT
VUJ_TWR	126.270		CLT

The information contained herein is for reference only. Some information may be out of date. **Always reference the published SOP for the correct frequencies to use.** Last updated 2/2/2020.

Note: The information in attachment B is for reference *only* and is not intended to replace the frequencies published in facility SOPs.